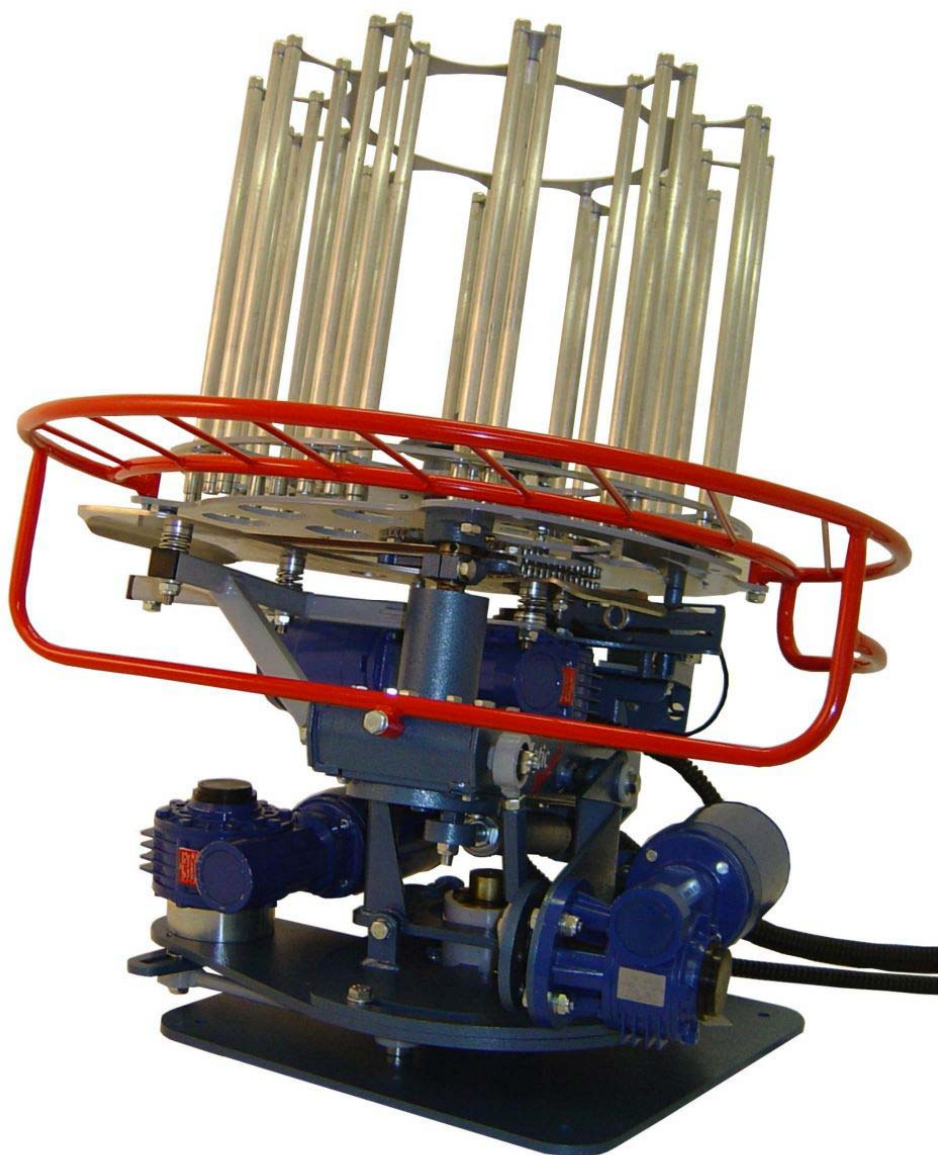


Due//Matic A/S

Operating Instructions Compact 12 Wobble Trap



DUE//MATIC A/S, FJORDVEJ 21
TEL. +45 8640 5888
E-MAIL: duematic@duematic.dk

8900 RANDERS, DENMARK
FAX: +45 8641 8111
WEB: www.duematic.com

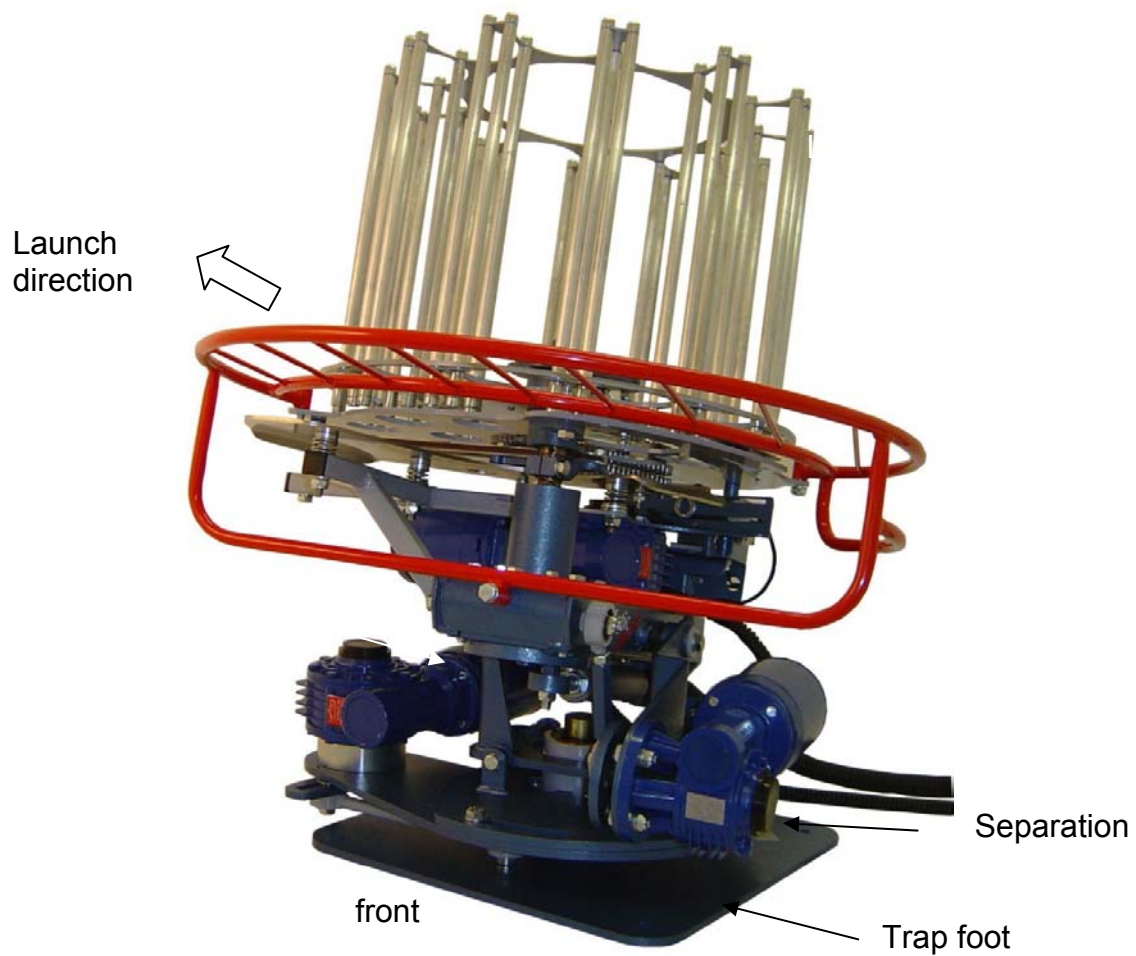
List of contents

3. **Assembling the trap**
4. **Electronics box**
5. **Operation off all switches**
6. **House drawing. Wobble Trap**
7. **Starting the trap**
8. **Unloading and switch off the trap**
9. **Adjusting the length of the launch**
10. **Vertical adjustment**
11. **Horizontal adjustment**
12. **Adjusting target seperator knives**
13. **Capsize adjustment** (if the tagets capsizes in the air)
14. **Adjusting the micro-switch**

Electrical diagrams

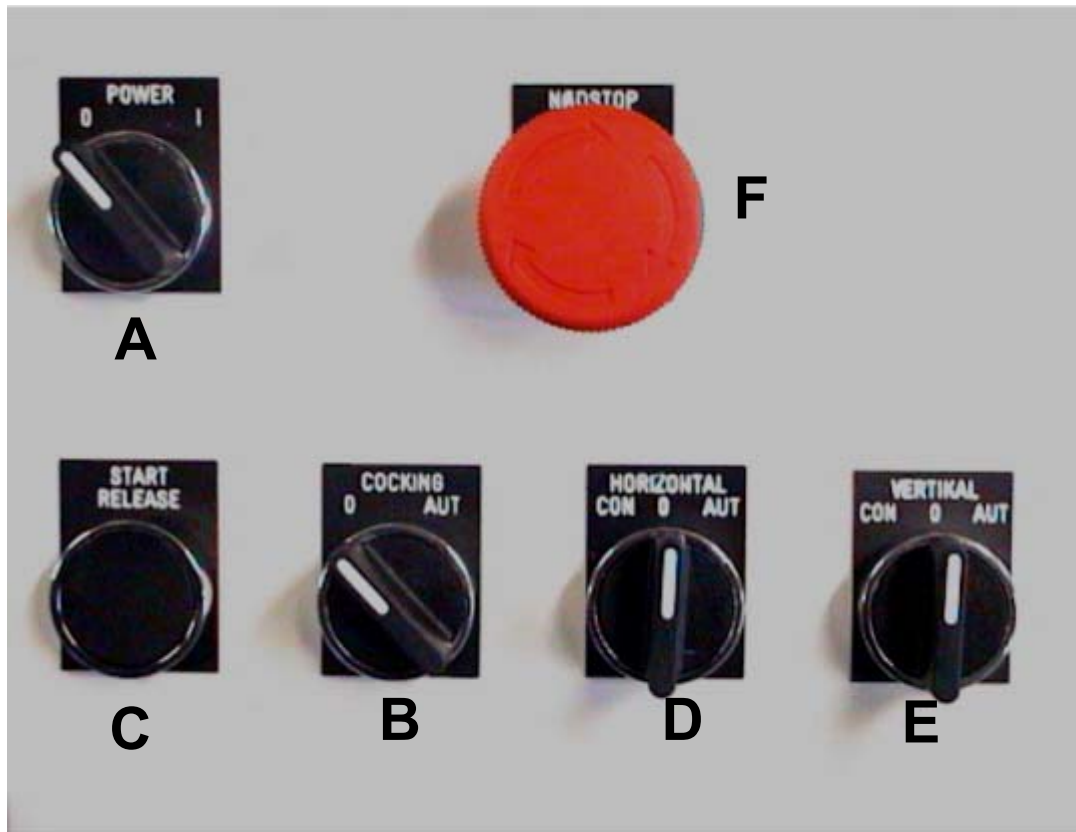
Assembling the trap

1. Separate the trap into 2 parts
2. Place the foot on the base plate facing the direction in which the targets are to be launched



3. Secure the foot with the angle braces
4. Mount the trap on the foot

Electronic box

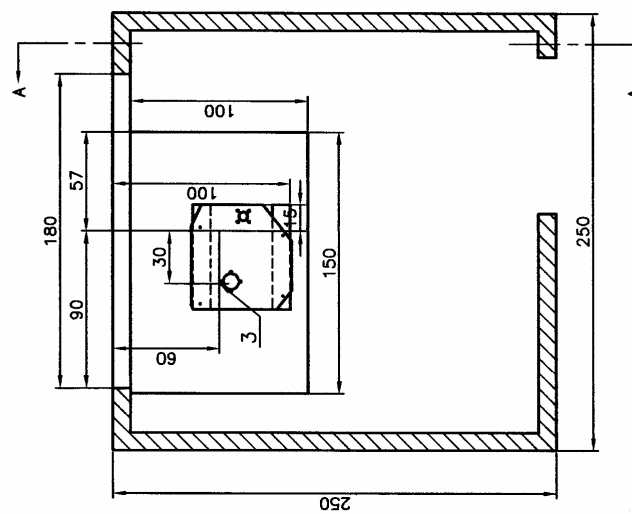


Operation of all switches:

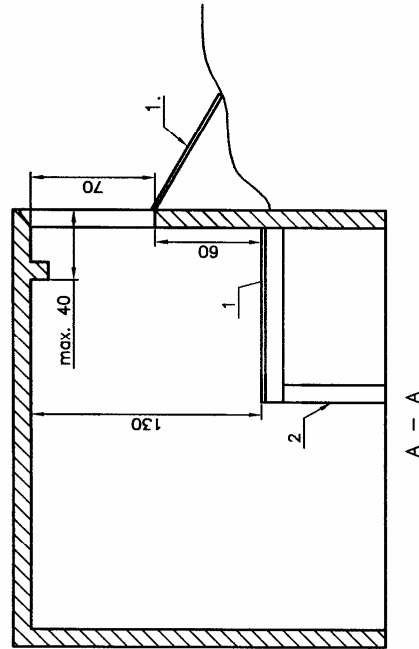
1. Connect the trap to the source of power
2. Check whether the source of power is 115 or 230 volts
3. The following switches can be found on the electronics box
 - A. **POWER** with 2 settings: "0" & "1"
The trap is turned off when set at "0"
The trap's functions are ready when set at "1"
 - B. The **COCKING** switch has two settings "0" & "AUT"
When set at "0", the trap operates for the time the "START-RELEASE" button is depressed.
When set at "AUT", the trap's springs tighten when the "START-RELEASE" switch is depressed. The same function can be operated by actuating the pressure switch.
 - C. **START-RELEASE** is a push button switch. By pressing the "START-RELEASE" button when "COCKING" function is set in the "0" position, the trap operates only for the time the "START-RELEASE" button is depressed. If the "COCKING" switch is set at "AUT" the trap's springs tighten in loaded function. The trap is now loaded, and the targets can be launched with the "START-RELEASE" button. The same function can be operated by actuating the pressure switch.
 - D. **HORIZONTAL** is a rotary switch with 3 settings. When set at "0", the horizontal function of the trap is turned off. This function is only used when the trap is to be used to launch targets in a specific horizontal direction. When set at "AUT" the trap moves in a pre-programmed pattern-after launching one target the trap is automatically set a new horizontal position and stops. When set at "CON", the trap moves continually through the horizontal range.
 - E. **VERTICAL**, is a rotary switch with 3 settings. When set at "0", the trap does not alter its height. This function is only used when the trap is to launch targets at a specific height. When set at "AUT", the trap moves in a pre-programmed pattern-after launching one target the trap is automatically set a new vertical position and stops. When set at "CON", the trap moves continually through the vertical range.
 - F. **EMERGENCY STOP** If the emergency stop button has been used. Turn the switch to turn on the power.

Please note: when the switches on the trap are set at "AUT" the following happens: After a target has been launched, the trap moves in pre-programmed pattern for 15 seconds and then stops. This is done so that the marksman cannot predict where the next target will be launched.

House drawing



1. 22 mm. woodplate
2. 100 x 100 mm. timber
3. Centre of launching arm



All abstract measures in cm

Målningskod	Firma	DUE//MATIC	Målningskod	Tagnr./998 BKS
			Endnr./998 BKS	
			Kont./2701 TA	
Benämning		Tg. nr.		
House. Wobble Trap		001nikdu		

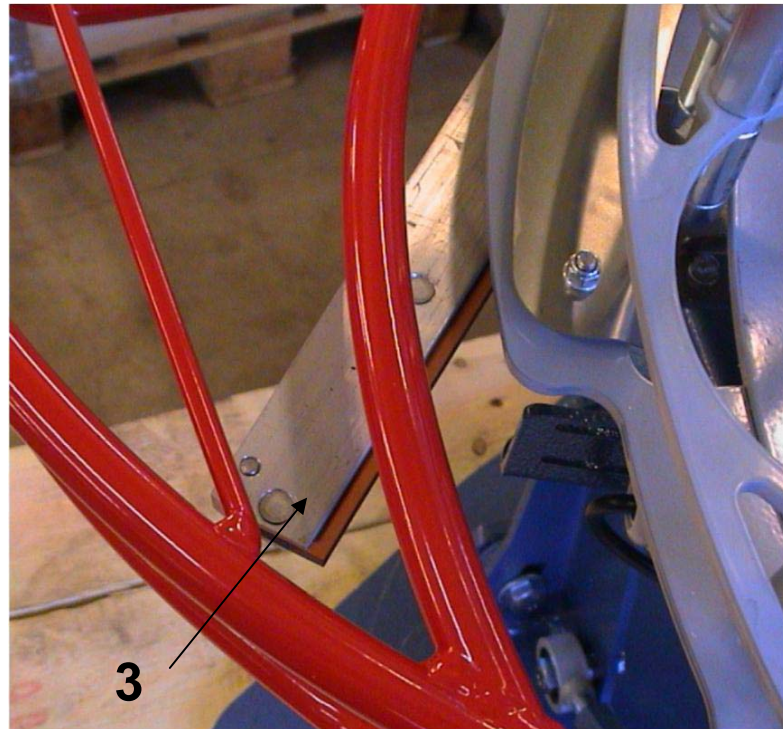
Starting the trap

1. Check that the direction of launch is clear
2. Connect the pressure switch
3. Check that the “EMERGENCY STOP” button has not been actuated
4. Turn the “POWER” switch to position “1”
5. Turn the “COCKING” switch to the “AUT” position
6. Turn the “HORIZONTAL” switch to the “AUT” position
7. Turn the “VERTICAL” switch to the “AUT” position
8. When the “START-RELEASE” button is depressed, the throwing arm will be placed in cocking position
9. When the “PRESSURE SWITCH” is pressed, a target will be launched. The trap will move both horizontally and vertically.



Unloading and switch off the trap

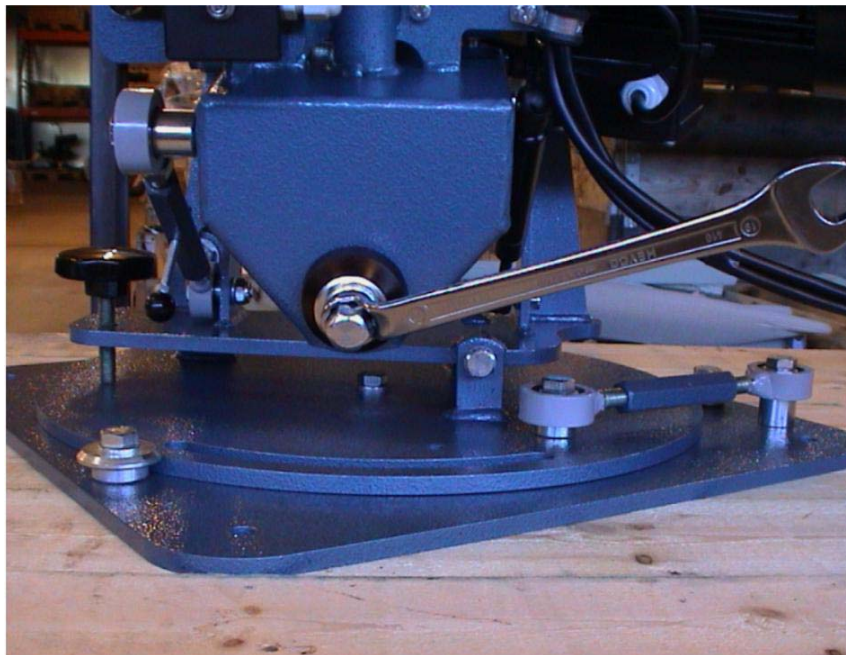
1. Turn the “COCKING” switch to the “0” position
2. Depress the “START-RELEASE” button and launch a target
3. The launching arm will be set in the “original position”
4. Turn the “POWER” switch to the “0” position
The trap is now switched off



Adjusting the length of launch

NOTICE: BY ALL ADJUSTMENT UNLOAD THE MACHINE

Adjust the length of the launch with 19 mm spanner



1. Turn right to increase the length of launch to max.
2. Turn left to decrease the length of launch to min.

Vertical adjustment

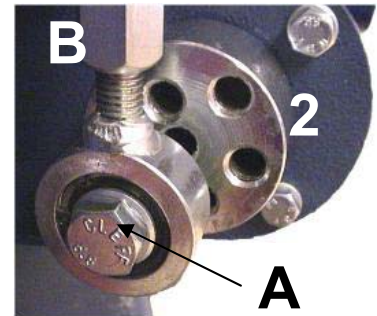
NOTICE: BY ALL ADJUSTMENT UNLOAD THE MACHINE

On the vertical motor there are 7 different vertical settings

The holes are marked from 0 to 6. The smallest number gives the least deflection.

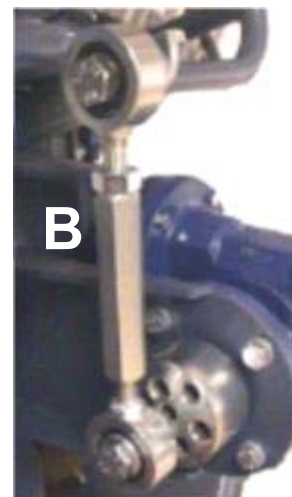
Changing the vertical angel:

1. Loosen bolt "A" with 19 mm spanner
2. Move the connection bar "B" to ex. hole "2"
3. Remember to tighten bolt "A" after adjustment



Changing the gliding height:

4. Adjust the the connection bar "B"
5. By shortening the connection bar, the gliding height of targets changes to a lower level, and revers



Horizontal adjustment

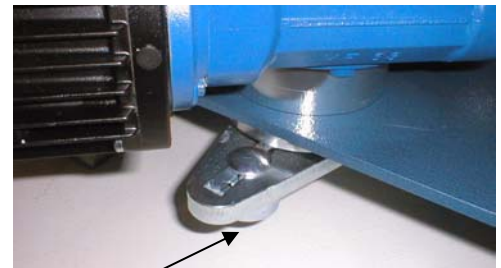
NOTICE: BY ALL ADJUSTMENT UNLOAD THE MACHINE

Connect the trap to the source of power. Turn the trap to the extreme left position.

1. Turn the "HORIZONTAL" switch, to "CON" setting
When the trap is at the far left , turn the switch to "0"



2. Loosen bolt "A" with 19 mm spanner, and adjust the angle by moving the connection bar in the groove of adjusting arm.

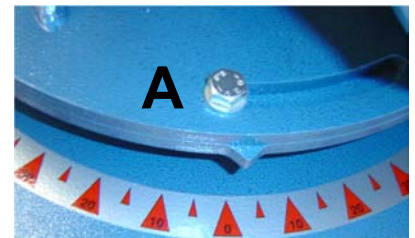


A



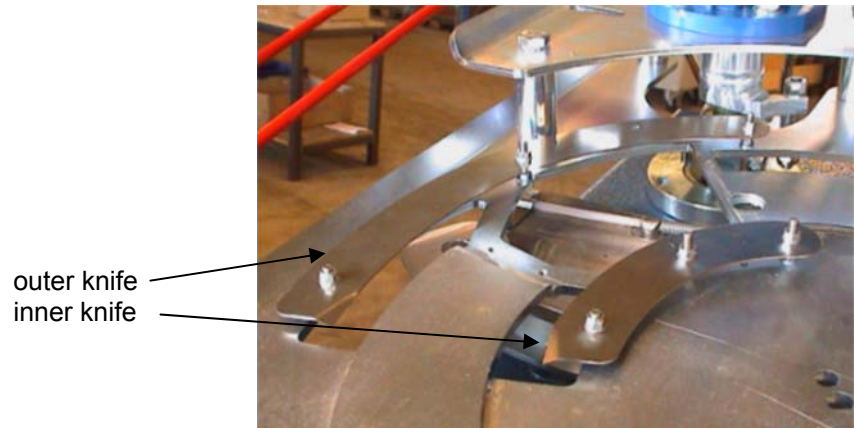
From the bottom

3. When position of bolt "A" is in center, "0" is on the scale of degree
4. Remember to tighten bolt "A" after adjustment



Adjusting target separator knives.

NOTICE: BY ALL ADJUSTMENT UNLOAD THE MACHINE

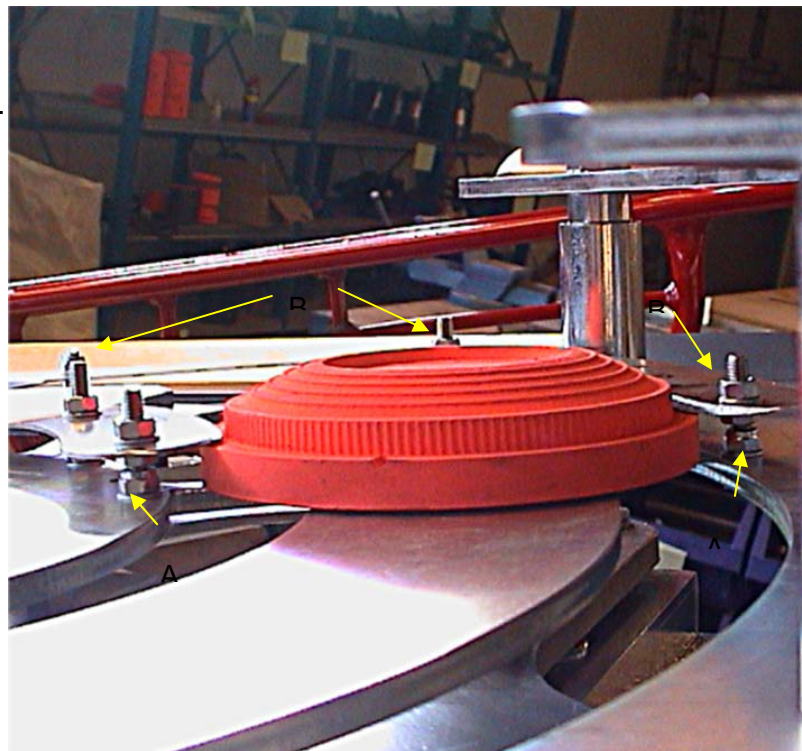


Seperator knives

Adjust knives up/down bolt "A" .
Use 8 mm spanner.
Distance between knives and
target:
Just a little slice (0,2 mm)

In the outer knife, loosen bolt
"B" (3 pcs) with 8 mm spanner
adjust the knife so the targets
can pass.
Distance about 1 mm

Remember to tighten the bolts
"B" after adjustment.

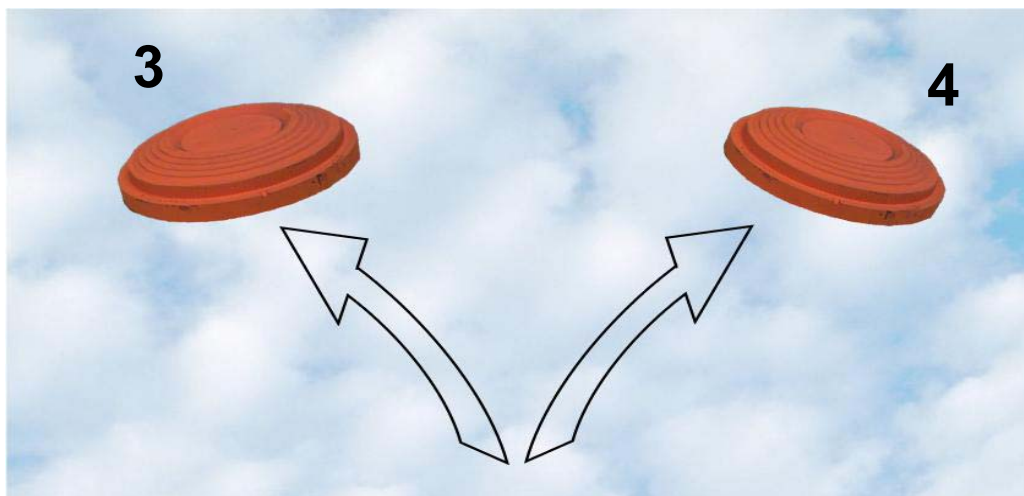
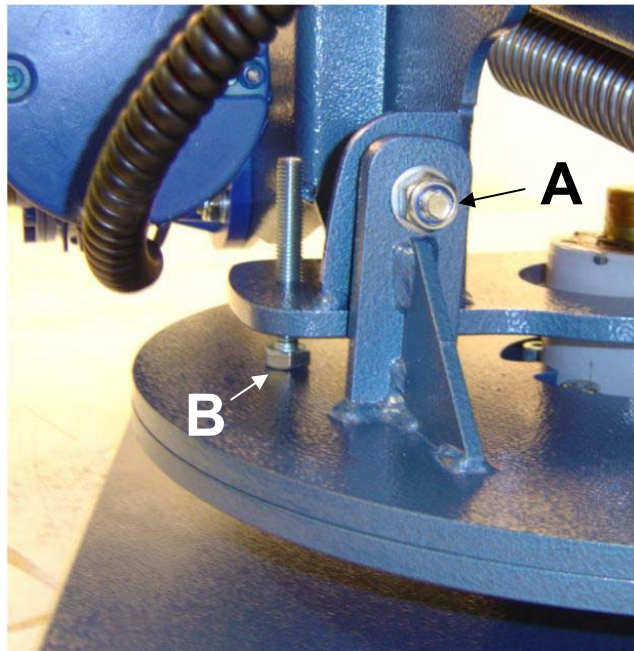


Capsize adjustment (if the target capsizes in the air)

NOTICE: BY ALL ADJUSTMENT UNLOAD THE MACHINE

1. Loosen the bolt "A" with 9 mm spanner
2. Adjust the bolt "B" with 19 mm spanner, to the right or to the left
3. If the target capsizes left, turn the bolt anti-clockwise until the target lies straight in the air
4. If the target capsizes right, turn the bolt clockwise

Remember to tighten bolt "A" after adjustment



Adjusting the micro-switch

NOTICE: BY ALL ADJUSTMENT UNLOAD THE MACHINE

When loaded, the placement of the launching arm is determined by a micro-switch. If the latter is set incorrectly, the launch may be delayed and the trap may launch several targets after one another, even if the pressure switch is only pressed once

1. The launching arm too far to right,
adjust the micro-switch to left
2. The launching arm too far to left,
adjust the micro-switch to right

